



LOURDES A. LEON GUERRERO
GOVERNOR (MAGA'HAGA)

JOSHUA F. TENORIO
LIEUTENANT GOVERNOR
(SIGUNDO MAGA'HAGA)

DEPARTMENT OF ADMINISTRATION

GENERAL SERVICES AGENCY

AHENSIAH SETBISION HINIRAT
148 ROUTE 1 SOUTH MARINE CORPS DRIVE, Piti, GU 96915
TELEPHONE: (671) 475-1707/1708
FAX: (671) 472-4217/1727
EMAIL: GSAPROUREMENT@GSADOA.GUAM.GOV
WEBSITE: WWW.GSA.DOA.GUAM.GOV



EDWARD M. BIRN
DIRECTOR (DIREKTOT)

BERNADINE C. GINES
DEPUTY DIRECTOR
(SIGUNDO DIREKTOT)

April 28, 2022

**INVITATION FOR BID
GSA-020-22
CAMERA SYSTEM UPGRADE AND REPLACE SERVER SYSTEM
Bureau of Statistics Plans (for Department of Youth Affairs)
AMENDMENT #3**

1. Amend page 3 of 37.

From:

This bid shall be submitted in duplicate and sealed to the issuing office above no later than (Time) **10:00am**, Date: **04/29/2022** and shall be publicly opened. Bid submitted after the time and date specified above shall be rejected. See attached General Terms and Conditions, and Sealed Bid Solicitation for details.

To now read:

This bid shall be submitted in duplicate and sealed to the issuing office above no later than (Time) **10:00am**, Date: **05/16/2022** and shall be publicly opened. Bid submitted after the time and date specified above shall be rejected. See attached General Terms and Conditions, and Sealed Bid Solicitation for details.

2. Amend page 2 of 37.

From:

All questions and concerns in regards to this bid must be submitted to the General Services Agency via fax attention to the Chief Procurement Officer no later than Friday, March 4, 2022 close of business at 5:00pm.

To now read:

All questions and concerns in regards to this bid must be submitted to the General Services Agency via fax attention to the Chief Procurement Officer no later than **Wednesday, May 4, 2022 close of business at 5:00pm.**

3. Amend page 37 of 37.

From:

- Following the new provisions of the 2 C.F.R. Part 200 language:
**PROHIBITION ON CERTAIN TELECOMMUNICATIONS
AND VIDEO SURVEILLANCE SERVICES AND EQUIPMENT,**
BSP will ensure For the purpose of public safety, security of government facilities, physical security surveillance of critical infrastructure, and other national security purposes, Contractor and all subcontractors are prohibited from procuring, obtaining, or purchasing: 1) equipment, services, or systems that uses covered telecommunications equipment or services as a substantial or essential component of any system, or as critical technology as part of any system. As described in Public Law 115-232, section 889, covered telecommunications equipment is telecommunications equipment produced by Huawei Technologies Company or ZTE Corporation (or any subsidiary or affiliate of such entities); 2) video surveillance and telecommunications equipment produced by Hytera Communications Corporation, Hangzhou Hikvision Digital Technology Company, or Dahua Technology Company (or any subsidiary or affiliate of such entities); 3) telecommunications or video surveillance services provided by such entities or using such equipment; and 4) telecommunications or video surveillance equipment or services produced or provided by an entity that the Secretary of Defense, in consultation with the Director of the National Intelligence or the Director of the Federal Bureau of Investigation, reasonably believes to be an entity owned or controlled by, or otherwise connected to, the government of a covered foreign country. Therefore, the Government needs the assistance to purchase a Class 2, three quarter ton pickup truck through the use of competitive procurement.

To now read:

- Following the new provisions of the 2 C.F.R. Part 200 language:
**PROHIBITION ON CERTAIN TELECOMMUNICATIONS
AND VIDEO SURVEILLANCE SERVICES AND EQUIPMENT,**
BSP will ensure For the purpose of public safety, security of government facilities, physical security surveillance of critical infrastructure, and other national security purposes, Contractor and all subcontractors are prohibited from procuring, obtaining, or purchasing: 1) equipment, services, or systems that uses covered telecommunications equipment or services as a substantial or essential component of any system, or as critical technology as part of any system. As described in Public Law 115-232, section 889, covered telecommunications equipment is telecommunications


equipment produced by Huawei Technologies Company or ZTE Corporation (or any subsidiary or affiliate of such entities); 2) video surveillance and telecommunications equipment produced by Hytera Communications Corporation, Hangzhou Hikvision Digital Technology Company, or Dahua Technology Company (or any subsidiary or affiliate of such entities); 3) telecommunications or video surveillance services provided by such entities or using such equipment; and 4) telecommunications or video surveillance equipment or services produced or provided by an entity that the Secretary of Defense, in consultation with the Director of the National Intelligence or the Director of the Federal Bureau of Investigation, reasonably believes to be an entity owned or controlled by, or otherwise connected to, the government of a covered foreign country.

4. Amend to replace page 36 of 37 with the "Revised 04/26/2022 Page 36 of 37," attached.
5. Amend to include Addendum's 1 through 7 "layout" as part of the bid packet.

Please Note:

A second site visit is scheduled at **9:00 am, Tuesday, May 3rd**. Meeting location will be at the Department of Youth Affairs, 169 San Isidro Mangilao Guam. A valid Government of Guam issued Identification Card must be submitted to Danielle Camacho no later than 12noon, Monday May 2nd via email at danielle.camacho@dya.guam.gov or (671) 735-5037 to process security clearance prior to entering the facility.

All others remain unchanged.


CLAUDIA S. ACFALLE
Chief Procurement Officer

Please Print

Acknowledgement Copy (Re-Fax to GSA)

Received By: _____

Date: _____

Company Name: _____

Fax to: 475-1727 or 472-4217

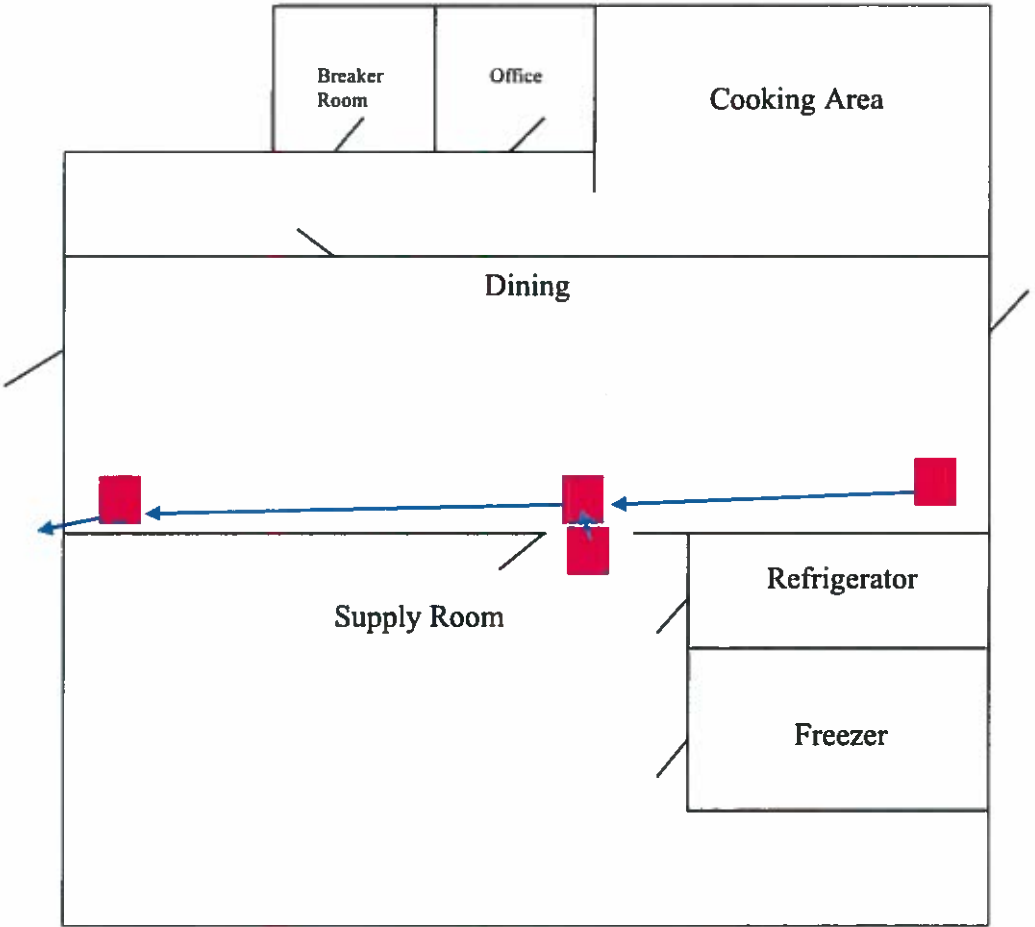
Email to: gsaprocurement@gsadoa.guam.gov

- Remove and dispose of current surveillance server system at Superintendent's office with the exception of the POE switch and TV monitor. _____
- Provide new surveillance server along with 1 each UPS battery backup and/or surge protector to be installed at Superintendent's office and configured to connect to existing IP network with configuration of remote access for authorized personnel. _____
- Provide one (1) desktop, peripherals, one (1) each UPS battery backup and/or surge protector to be installed at DYA's Intake and configured to connect to existing IP network. _____
- Install 6 TRENDnet cameras DYA has on-hand and configured to the video surveillance system (three at LF2, Bldg. H 2nd floor, Intake, and Delta dayroom 1). _____
- **Surveillance server system specifications:**
 - A. Remote access viewing capabilities _____
 - B. 4-8 additional HDD slots with up to 2 TB in each slot _____
 - C. Must have both IP channels _____
 - D. Ability to record at 5MP and 2560*1920 resolutions _____
 - E. H264 compression _____
 - F. Recording daily activity with real time recording _____
 - G. Peripherals _____
- Video management software shall offer both video/audio stream management and video stream capable of at least 3 months storage management. _____
- Recording frame rate and resolution in respect of individual shall be programmable. _____
- Reuse existing conduit, junction boxes and termination boxes that are still functioning while replacing damaged units with PVC and aluminum conduits where needed. _____
- Utilize existing POE switches that are still functioning. Otherwise provide power resources where needed. _____
- Training and instruction on the correct use, operation and supervision of the video surveillance system. _____
- Installation of video security/surveillance system to include all parts, equipment, and labor. _____
- And any other items/accessories required for installation, testing, and commission of video surveillance system. _____
- Upon completion of installation, configuration, and deployment of all the equipment, a layout of the camera locations, equipment locations, and wiring will be provided. _____
- Provide 20 Dome Cameras and 1 PTZ Camera:
 - Indoor**
 - Visible range of 10-100ft. or more _____
 - Two (2) or more must be able to view at a wide angle _____
 - 550+TVL for both day and night _____
 - Infrared for night-time viewing _____
 - To be housed in a dustproof and tamperproof housing _____
 - Capable of audio signal transmission _____
 - Outdoor camera**
 - Visible range of 10-100ft. or more (depending on location of camera) _____
 - 550+TVL for both day and night _____
 - Infrared for night-time viewing _____
 - To be housed in a dustproof, weatherproof, and tamperproof housing _____
 - PTZ**
 - Lens parameter of 20-1000mm _____
 - Visible range of 750ft. or more _____
 - 650+TVL for both day and night _____
 - Infrared nor night-time viewing _____
 - Advance motion detection system _____
 - To be housed in a dustproof, weatherproof, and tamperproof housing _____
- One year warranty on new equipment and labor. _____
- Following the new provisions of the 2 C.F.R. Part 200 language:
PROHIBITION ON CERTAIN TELECOMMUNICATIONS



YCF Galley

*Diagram is not to specifications



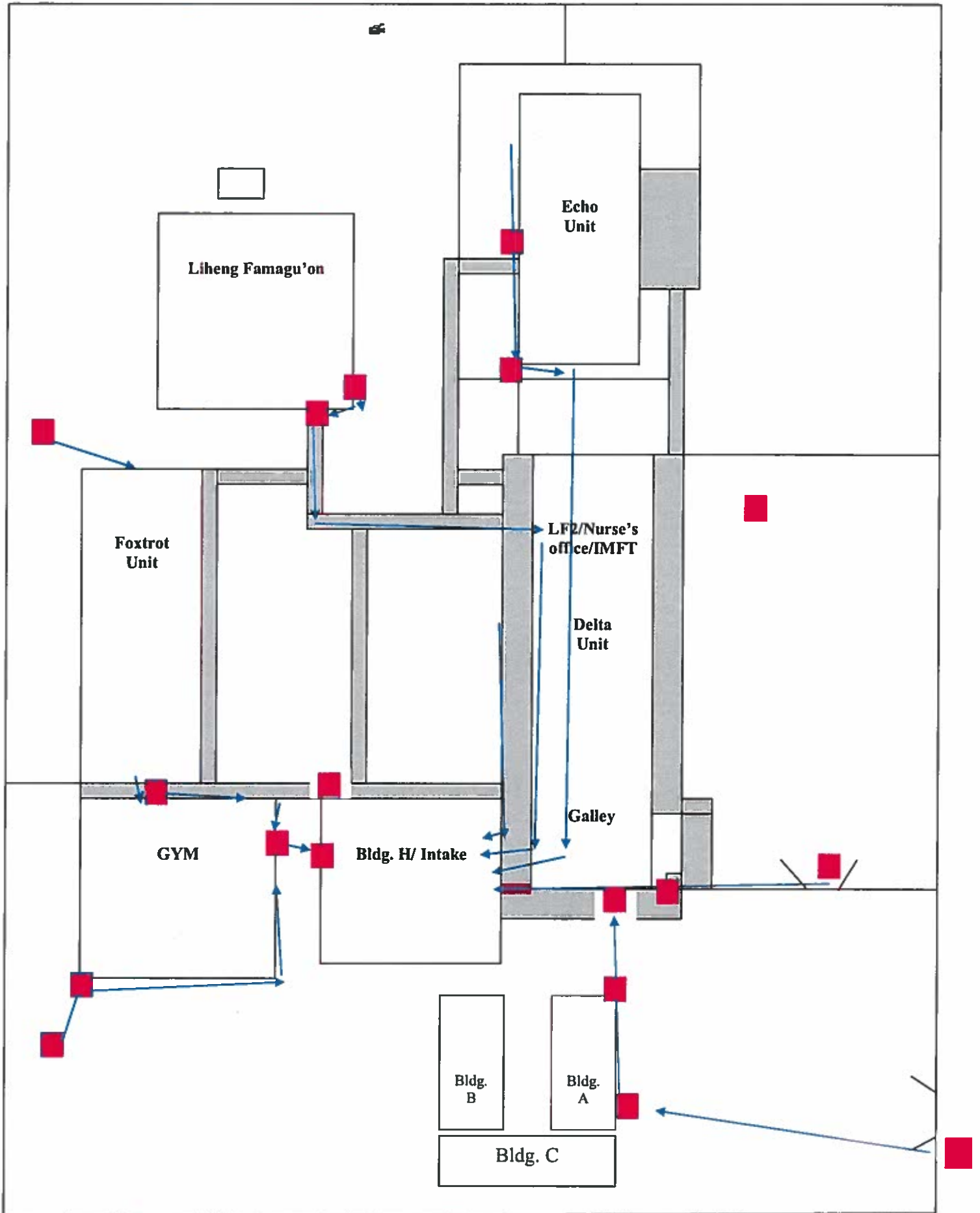
■ Camera Mount/Junction Box

→ Cable Line and Direction

YCF Facility

[Grab]

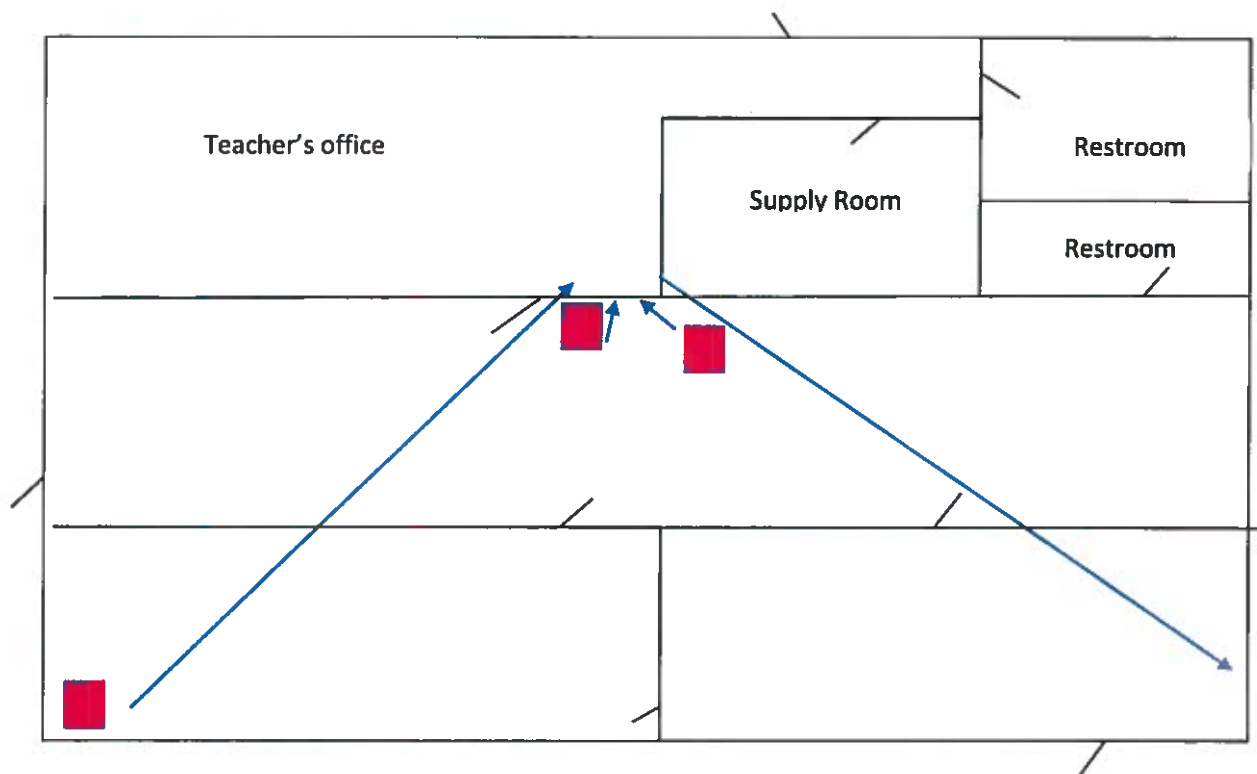
*Diagram is not to specifications





Liheng Famagu-on Layout

*Diagram is not to specifications

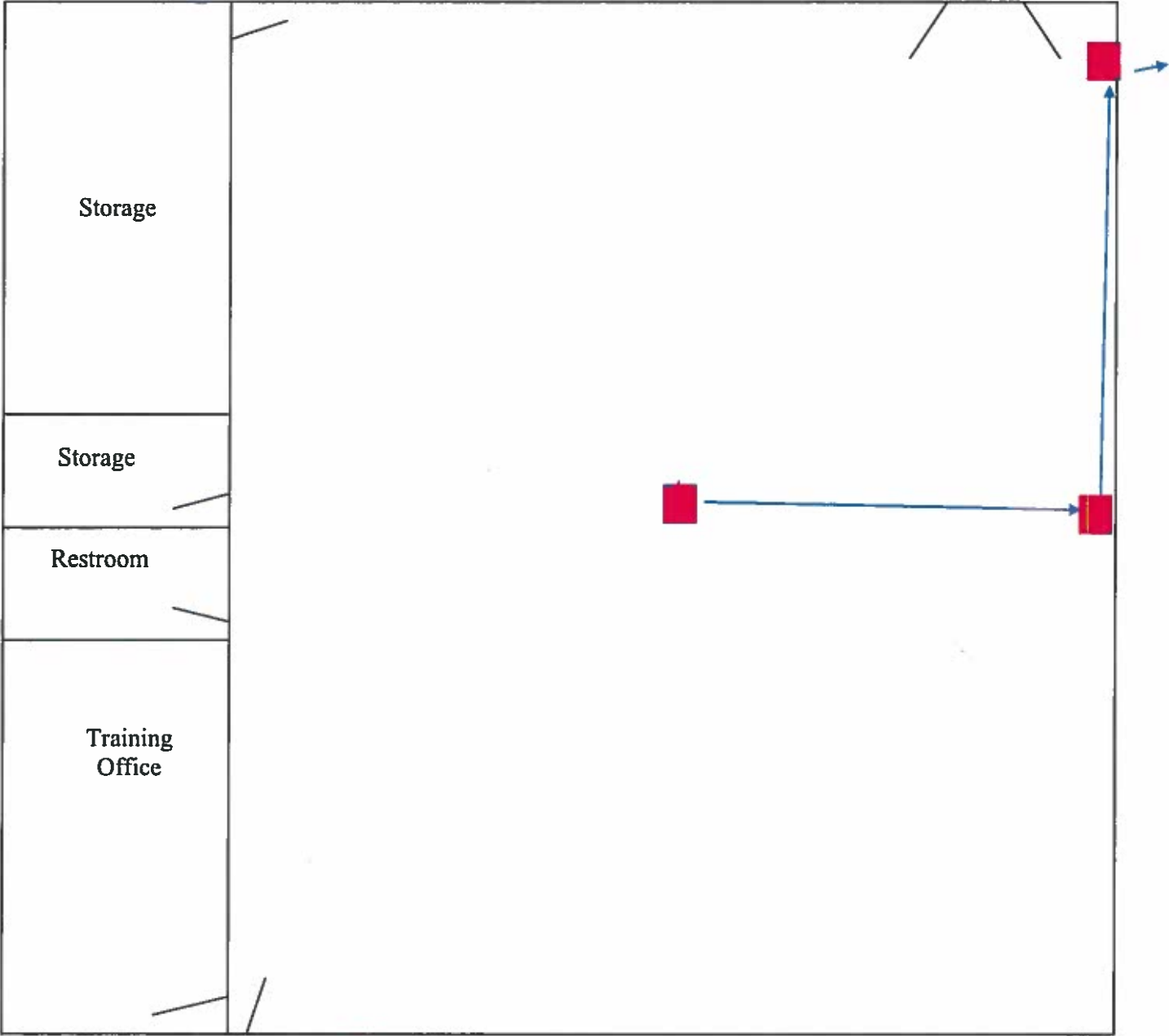


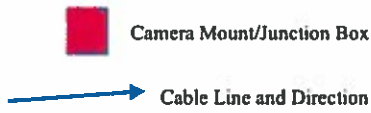
Cabling is laid in the drop-down ceiling



GYM

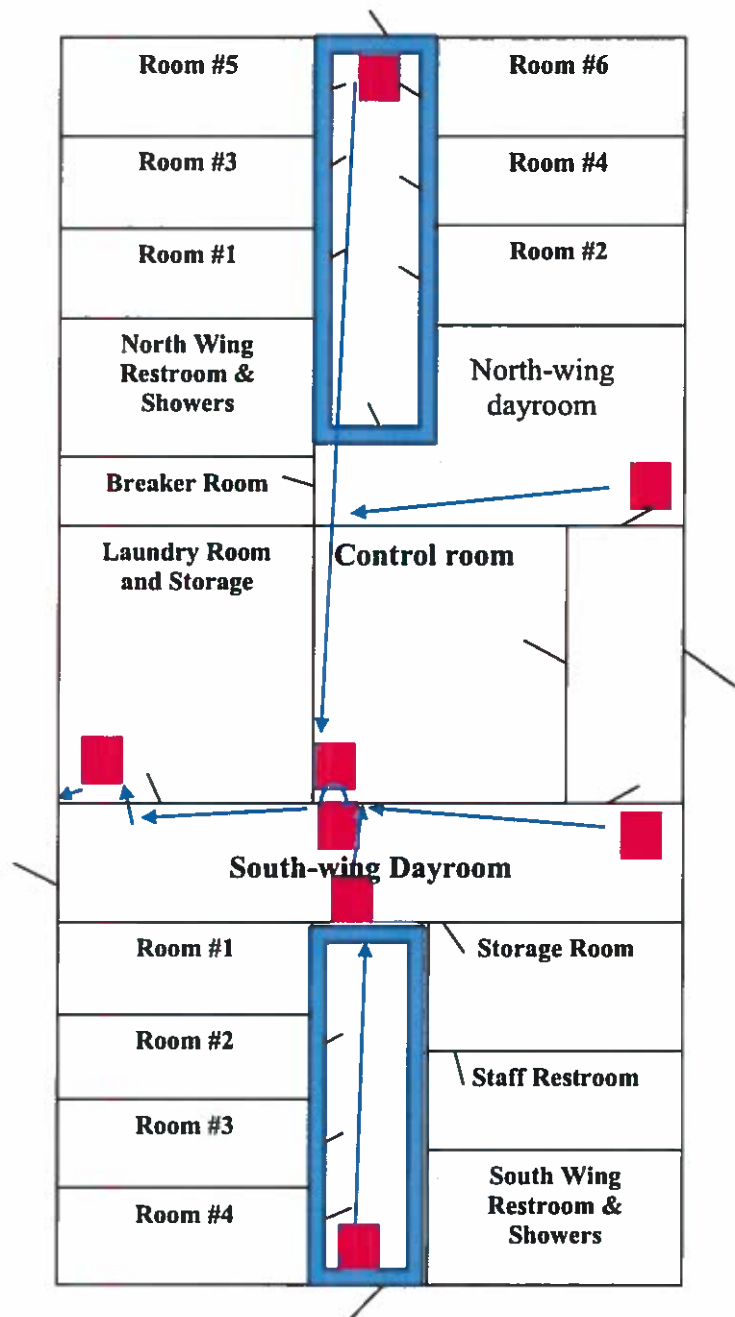
*Diagram is not to specifications





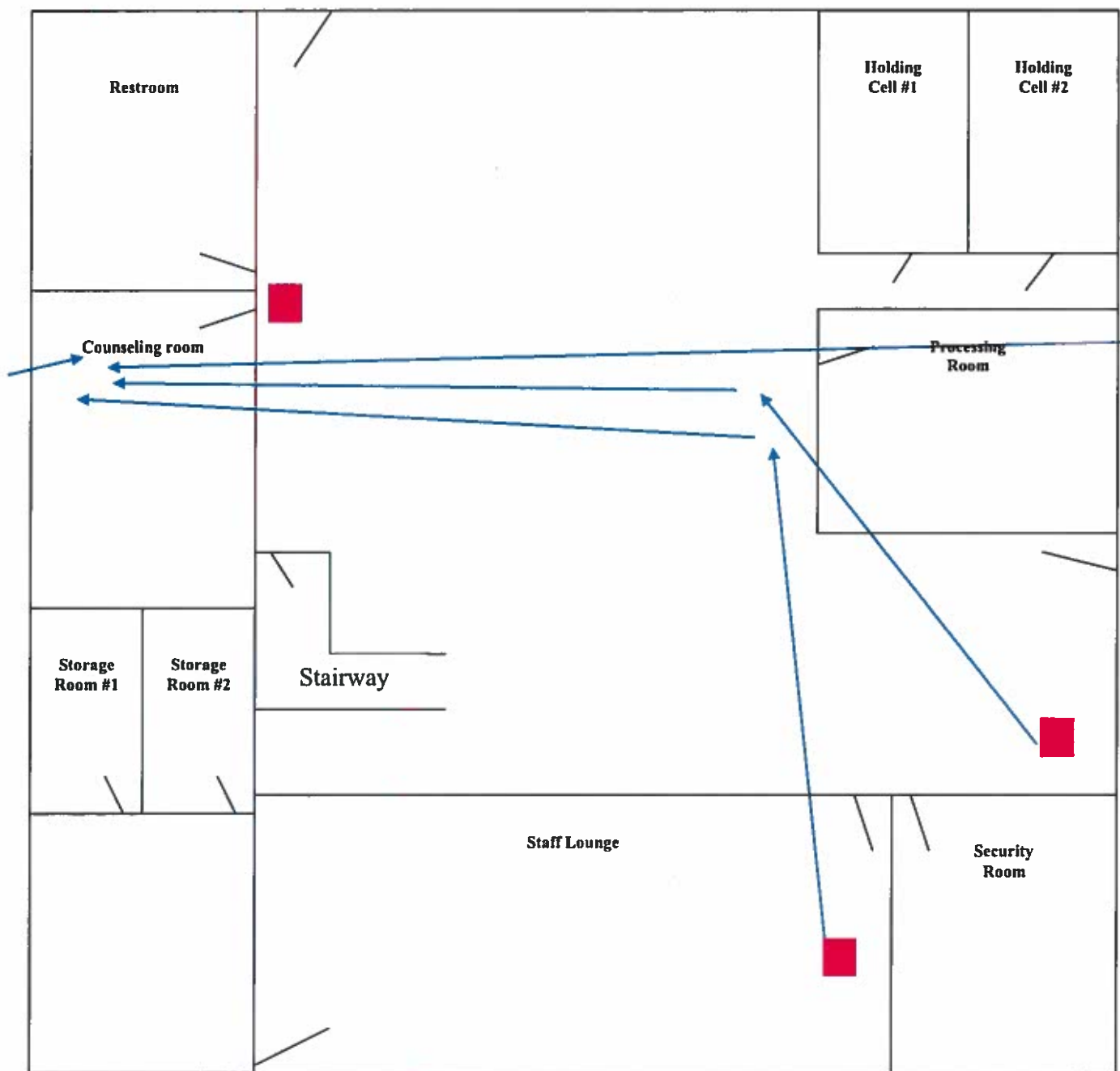
Echo Unit

*Diagram is not to specifications





YCF Building 'H'/ Intake
First Floor
*Diagram is not to specifications



Cabling is laid in the drop-down ceiling

Department of Youth Affairs
#169 San Isidro St. Mangilao, Guam 96923
P.O. Box 23672, GMF Barrigada, Guam 96921
Tel: (671) 735-5010
Fax: (671) 734-7536

Department of Youth Affairs Scope of Work

Assessment and Diagnosis

Cameras Operated by the iRas G4S DVR						
Camera Label	Location	Operational	Model No.	IP Address and Ports	Login	Notes
Delta	Above D-unit's entrance way to restroom	No	GID20M-VVW			Unit does not turn on, replace it.
Foxtrot Hallway 01	Above north entrance/exit door	Yes	GID10M-WIR	192.168.0.20 RTSP 554 ONVIF 80	Admin blank	Unit still functional.
Foxtrot Hallway 01	General Population hallway	No	GID10M-WIR	192.168.0.33		Replace unit.
Foxtrot Control Room	F-Unit control room	Yes	GID20M-VVW	192.168.0.212 RTSP 554 ONVIF 80	Admin blank	Unit still functional.
Foxtrot entry Hallway	F-unit dayroom; it faces the east exit/entrance door	Yes	GID10M-WIRH	192.168.0.37		Camera is in and out service.
PTZ Gate	Near West Perimeter fence; near bldg. G and the 40 ft. containers	No	PTZ Mobile Camera GSD36D-IRW			Unit shorting out due to weather damage. Replace unit.

Cameras Operated by the Luxriot Server						
Camera Label	Location	Operational	Model No.	IP Address and Ports	Login	Notes
Intake 2nd floor stairway	Near Glenda's workstation	No	ACM-3701E			Unit doesn't turn on, replace it.
LF Coordinator	LF 2/Old CCMU; LF Program Coordinator's office	No	ACM-3701E			Unit does not turn on, replace it.
LF2/Test	Near LF2 east exit/entrance	Yes	ACTi D55	192.168.0.127 RTSP 7070, ONVIF 6002	admin 123456	Unit still functional.
IMFT Office	Ed Taitano's office; above doorway	No	ACM-3701E			Unit doesn't turn on, replace it.

Camera Recording and Viewing Systems					
Location	POE Switch	Model #	Computer DVR	Model #	Monitor
Intake	0	N/A	1	N/A	2
Building H	1	GDH164A- Hybrid/GSK01	2	G4S DVR Acer Desktop	2
Galley	0	N/A	0	N/A	0
LF 2	0	N/A	0	N/A	0
D-unit	1	PLANET 8 Port POE Switch FSD-808P	1	HP DESKTOP	1
E-unit	1	Trendnet POE switches	1	HP Desktop	1
F-unit	1	PLANET 12 PORT POE SWITCH GS-4210-8P2T2S	1	DELL DESKTOP	1
LF School	1	N/A	0	N/A	0
Gym	None	None	None	None	None

Equipment and Materials Required

Equipment Required		
Item	Qty	Notes
Camera Surveillance Server	1	Replacement recording unit needs to be able to do 24/7 recording and have software that is compatible with all the old cameras and the replacement cameras and allow for PTZ control. This system must allow for remote access to the 4 control rooms stationed throughout the complex.
PTZ Camera, Pole Bracket & Mount	1	PTZ needs to be ordered along with the pole bracket and mount.
8-Port Gigabit Long Range POE+ Switch	1	This unit will be used for the PTZ camera which will go beyond the 300ft length capacity of CAT5/CAT6 cables and ensure the PTZ has both video feed and power.
Replacement IP Cameras	5	Use the 6 TrendNet IP cameras DYA has on hand.
Desktop PC	1	To replace the damaged unit in the Echo Unit. Requires minimum specifications of i5 Intell processor and at least 8GB of RAM.

Materials Required		
Item	Qty	Notes
Square Electrical Box Flat Cover	7	Mounting plates for the cameras.
Weatherproof Seals for RJ45	7	The 6 cameras that DOC has on hand has these seals and may be used wherever needed. Alternatively heat shrink tube may be used, or electrical tape, to ensure that no moisture seeps into the connector.
1-Gang Weatherproof Rectangular Blank Electrical Box Cover	2	To replace the covers of the boxes attached to the PTZ pole mount. Ensure they have proper seals attached to the back.
2-Gang Weatherproof Blank Cover Gray	1	To replace the cover of the box at the end of the buried run for the PTZ camera by the back of the gym. Ensure it has a proper seal attached to the back.
¾ or ½ inch Gang Hole Caps	4	To cover the holes for the above mentioned box. Ensure caps are weatherproofed.
½ Inch LB Cover	2	To cover the 2 LB junctions leading out of the Delta Unit. Ensure they have proper seal attached to the back.
1000ft Pull Box of CAT6 Plenum Cable	1	Total length of cable to replace for the DYA complex will be approximately 500ft. Whole spool may be purchased to allow for more slack or replace more cables when required.

Scope of Work

Intake Building

1. Mount camera on first floor between office and bathroom to the drop ceiling.
2. Replace camera on second floor above office worker's desk on the drop ceiling.
3. Remove old G4S DVR and G4S Acer computer recording systems and consolidate all cameras into the brand new camera server.
 - a. Setup remote viewing to the 4 control rooms throughout the complex.
 - b. The original G4S POE switch will be reused.
4. Set up 8-Port Gigabit Long Range POE+ Switch and connect to the G4S switch.
5. Setup the computer on the first floor to allow remote viewing of surveillance cameras.

Delta Unit

1. Replace junction LB covers outside the door to Delta Unit.
 - a. Use the replacement LB covers for the LB junctions for the cable.
 - b. Reattach the loose LB junction to the EMT pipe going in and out of the building in front of the door.
2. Replace line going from Delta Unit holding area to Intake Building, 200ft.
3. Setup the computer to allow remote viewing of surveillance cameras.

LF2 Unit

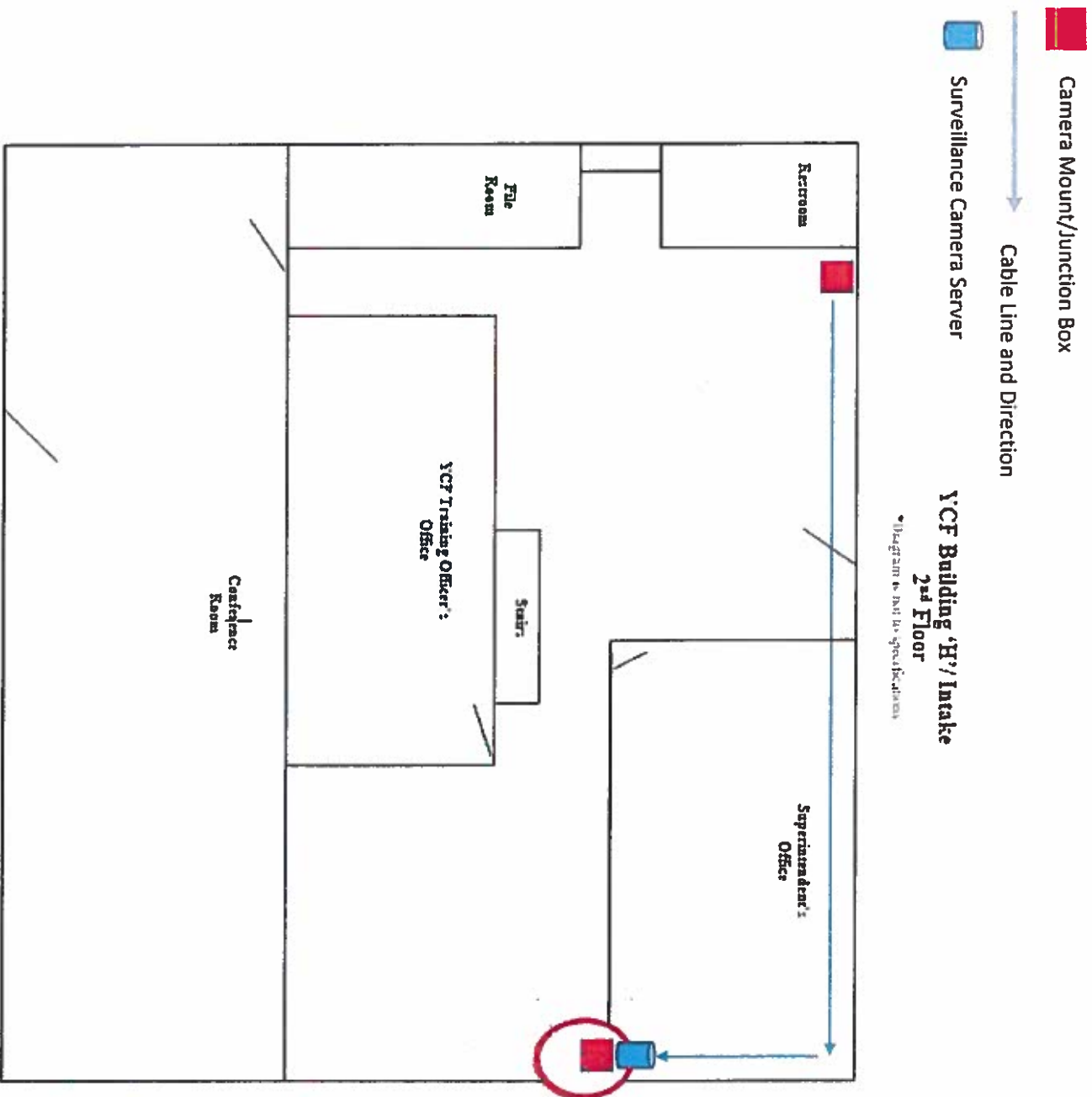
1. Replace the two cameras in the counselor's offices.
 - a. Ensure boxes for the cameras are sealed properly and that they do not allow pests inside.

Foxtrot Unit

1. Replace line going from Foxtrot PTZ camera going into the Foxtrot control unit.
2. Route the cable from the Foxtrot PTZ straight to the Intake Building, 300ft.
3. Connect this to the long range POE+ Switch to ensure power and stable video feed.
4. Seal the three junction boxes for the PTZ line and ensure that the cable will no longer be exposed to the elements.
 - a. There will be two junction boxes on the PTZ pole mount and the third will be at the end of the buried pipe at the Gym.
 - b. Replace all three covers with the weatherproof ones.
 - c. Cap and seal the exposed holes on the third box.
5. Remount and reseal 4 cameras in the Foxtrot Unit.
 - a. When remounting the cameras ensure that the cable connector is sealed with a weatherproof seal as the conduits for the lines and the mounting boxes are right beneath the airducts which generates moisture and water.
6. Setup the computer to allow remote viewing of surveillance cameras.

Echo Unit

1. Replace computer unit in Echo Unit control room.
2. Setup and configure this computer to allow remote viewing of surveillance cameras.



■ Camera Mount/Junction Box

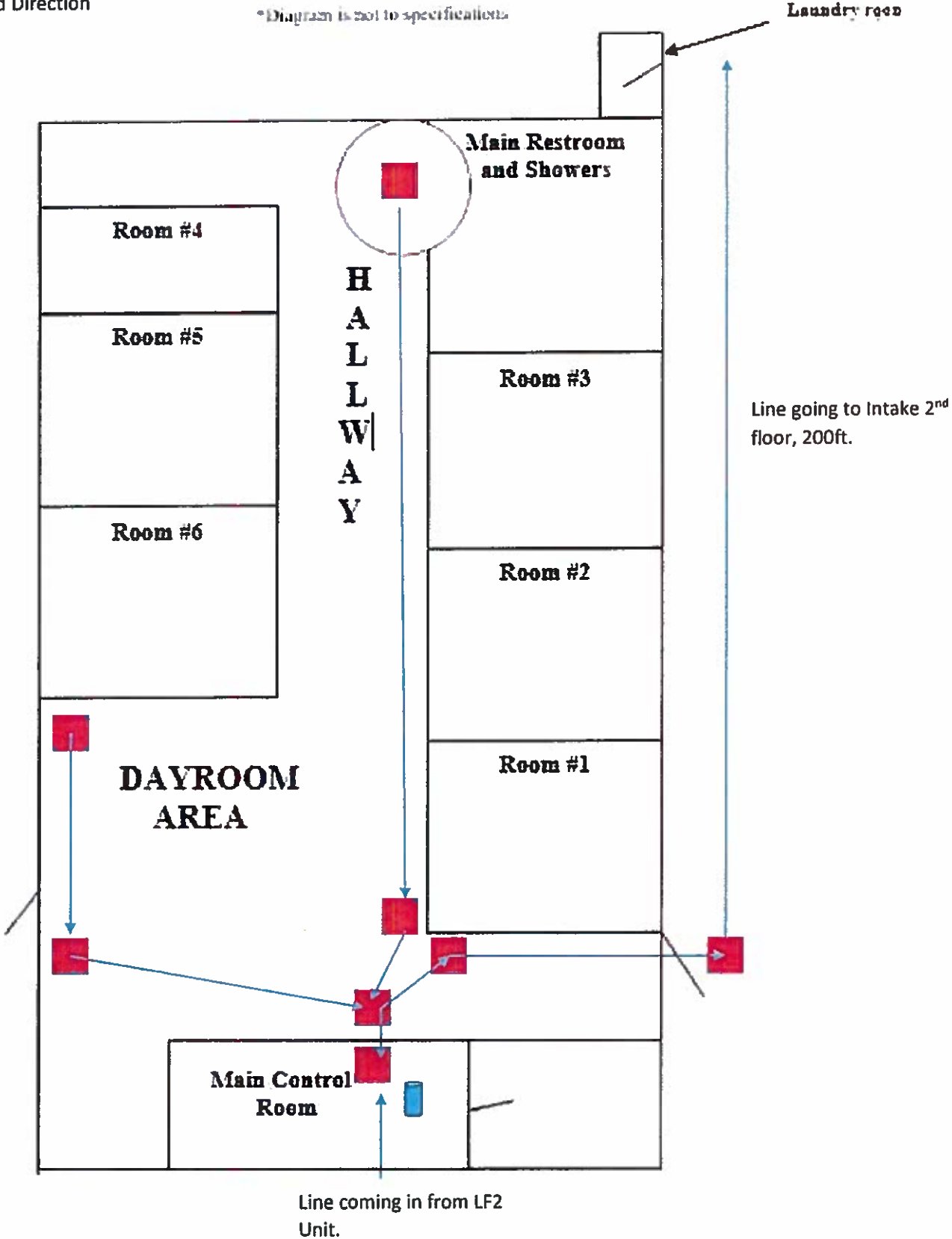


Cable Line and Direction

■ PC

Delta Unit

*Diagram is not to specifications

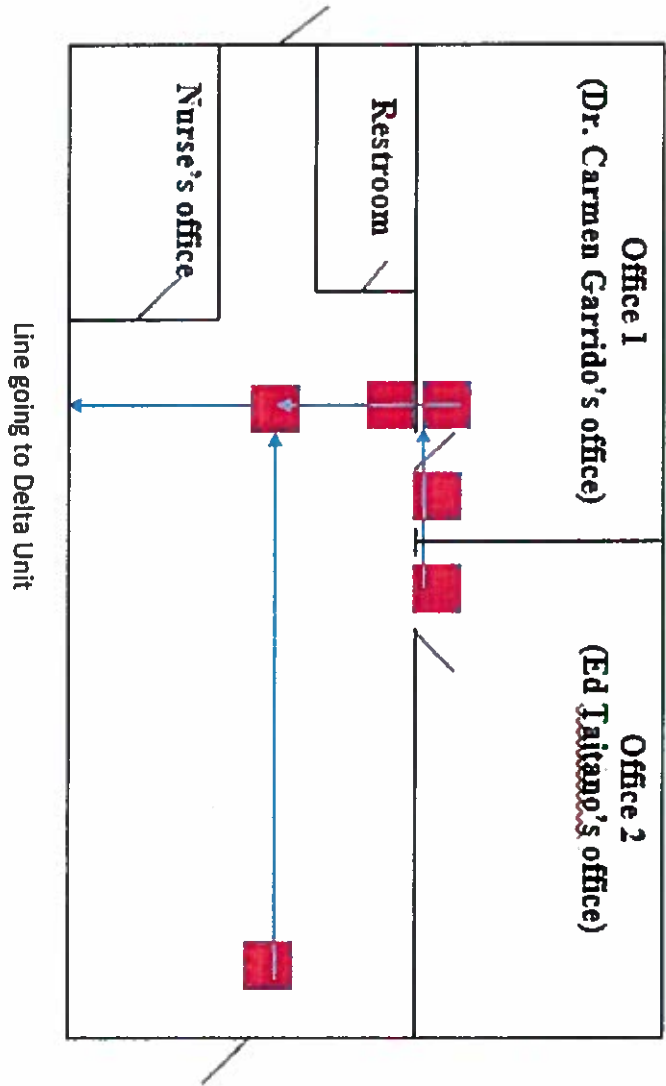


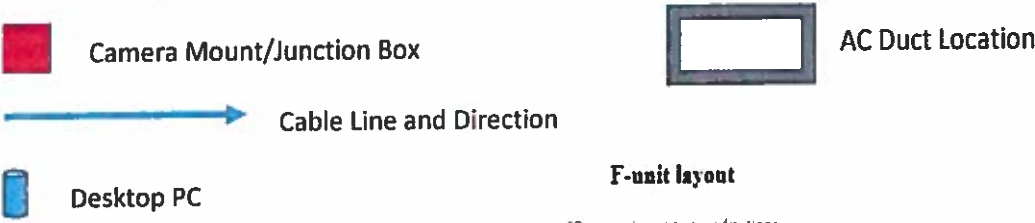
■ Camera Mount/Junction Box

→ Cable Line and Direction

Libeng Famagu'on 2 (LF2)/Nurse's office/ INIFT (Formerly Counseling Case Management Unit)
*Diagram is not to scale/indicates

All the cameras in this building are not streaming any footage.





F-unit layout

*Diagram is not to specifications

